



Produced in Partnership with the Centers for
Disease Control & Prevention (CDC) and the
Washington State Family Policy Council

Tacoma
Urban
Network

Adverse Childhood Experience and Juvenile Justice

Children's Justice Conference
April 6, 2009



Adverse Childhood Experience Study

Tacoma
Urban
Network

- 1994-1997 – Patients seen at Kaiser Permanente Health Care in San Diego, CA.
- 17,000 patients queried about their childhood experiences
- ACEs – compared to physical and mental health outcomes



Adverse Childhood Experiences (ACEs)

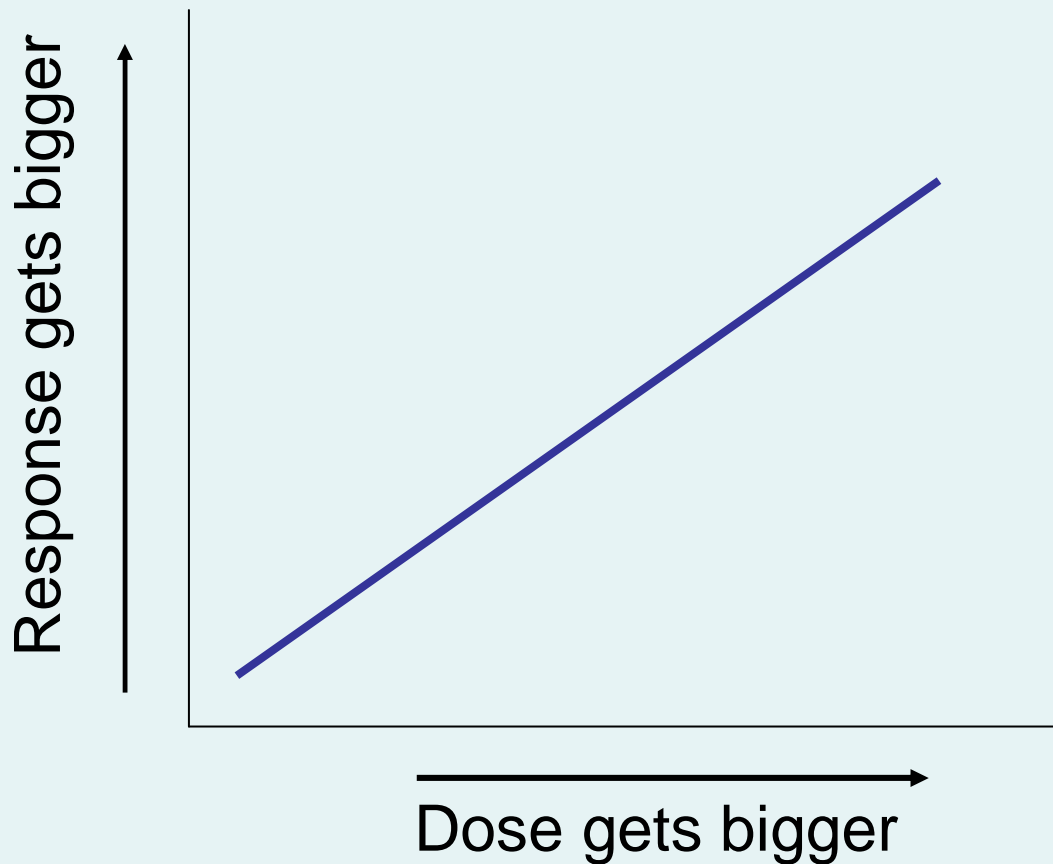
Tacoma
Urban
Network

- Child physical abuse
- Child sexual abuse
- Child emotional abuse
- Neglect
- Mentally ill, depressed or suicidal person in the home
- Drug addicted or alcoholic family member
- Witnessing domestic violence against the mother
- Loss of a parent to death or abandonment, including abandonment by divorce
- Incarceration of any family member



↑ ACEs = ↑ Health Problems

Tacoma
Urban
Network



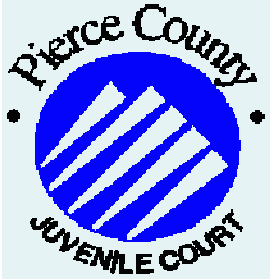
Dose-response is a direct measure of cause & effect.

The “response”—in this case the occurrence of the health condition—is caused directly by the size of the “dose”—in this case, the number of ACEs.



ACEs in Juvenile Justice

- Do Adverse Childhood Experiences influence behavioral outcomes for youth on probation?
 - Attaining protective skills
 - School performance
 - Drug/Alcohol use
 - Felony criminal behavior post-probation



Juvenile Justice in Washington State

Tacoma
Urban
Network

Risk Assessment Tool

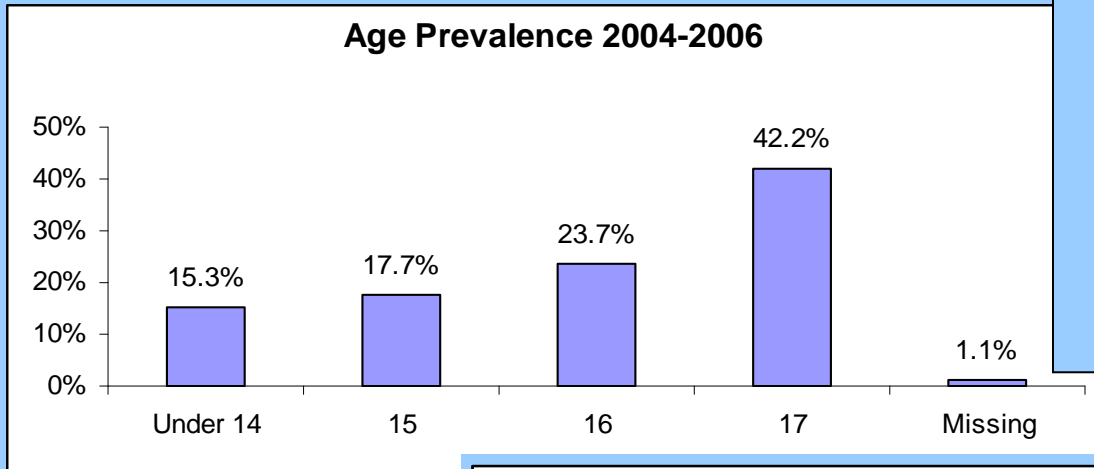
- Risk & Protective Profile Juvenile Offenders
- Pre-screen; Full Risk Assessment

Community Supervision

- Low Risk Caseload
- Moderate/High Risk Caseload (Field Unit)



Youth Characteristics



Income Levels

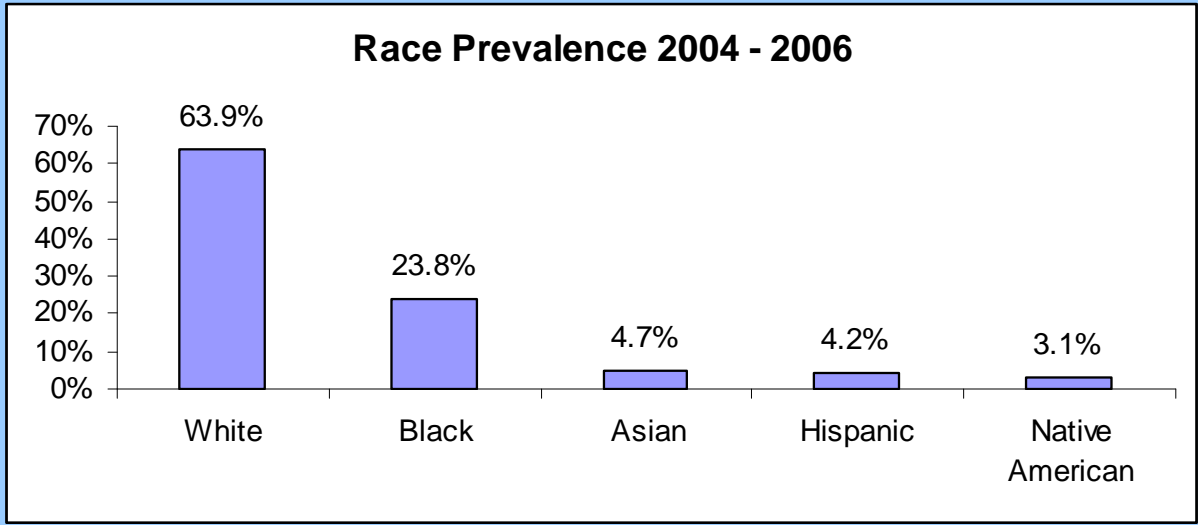
Less than \$15k = 21.3%

\$15k - \$35k = 43.5%

\$35k - \$50k = 21.5%

More than \$50k = 11.3%

75.6% Males
24.4% Females





ACEs Identified in the Risk Assessment

Tacoma
Urban
Network

Childhood Abuse

- Physical Abuse
- Sexual Abuse
- Emotional Abuse
- Neglect

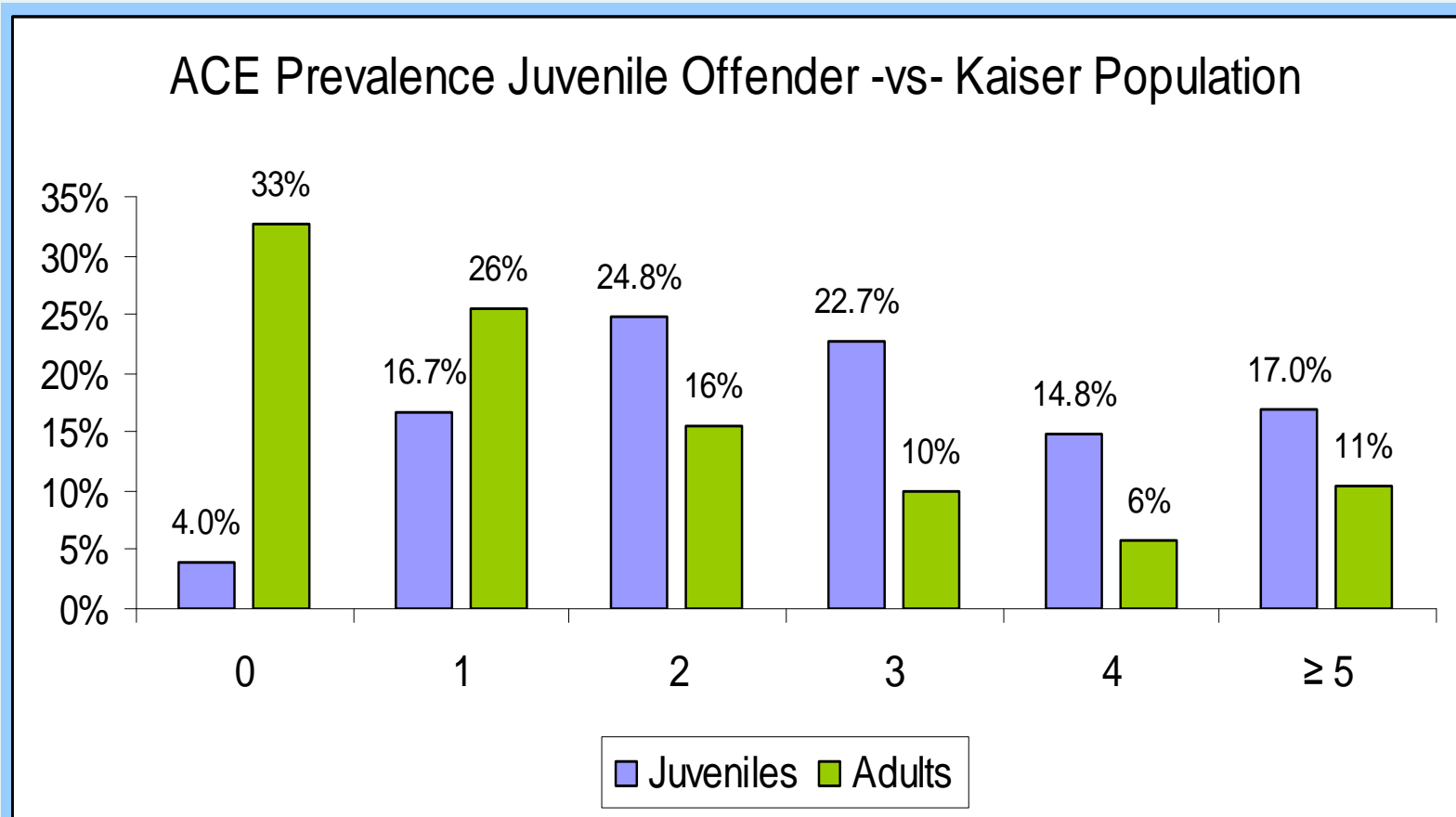
Household Dysfunction

- Loss of Parent
- Incarcerated Family Member
- Parent Alcohol Problem
- Parent Drug Problem
- Parent Mental Illness

Domestic Violence was not captured in this first draft of the data, but will be in the upcoming draft. Emotional abuse = verbal intimidation, yelling, heated exchanges.



Comparison of ACE Prevalence





Prevalence of Specific ACEs

Tacoma
Urban
Network

Childhood Abuse

Physical Abuse = 24.9%

Sexual Abuse = 12.6%

Emotional Abuse = 44.5%

Neglect = 17.1%

Household Dysfunction

Loss of Parent = 83.9%

Incarcerated Family Member = 54.3%

Parent Alcohol Problem = 21.6%

Parent Drug Problem = 19.5%

Parent Mental Illness = 11.6%

When exposed to one Adverse Childhood Experience the likelihood of exposure to one additional ACE is between **94.3%** and **100%** depending on the initial ACE exposure.

Exposure to two additional ACEs is between 60.2% and 95.2%



Additional ACE Exposures

Tacoma
Urban
Network

Incarcerated Family Member

Prevalence = 54.3%

97.5% one additional ACE

79.4% with two additional ACEs.

44.5% → emotional abuse
29.7% → physical abuse
29.2% → parent with alcohol.

Physical Abuse

Prevalence = 24.9%

98.1% one additional ACE

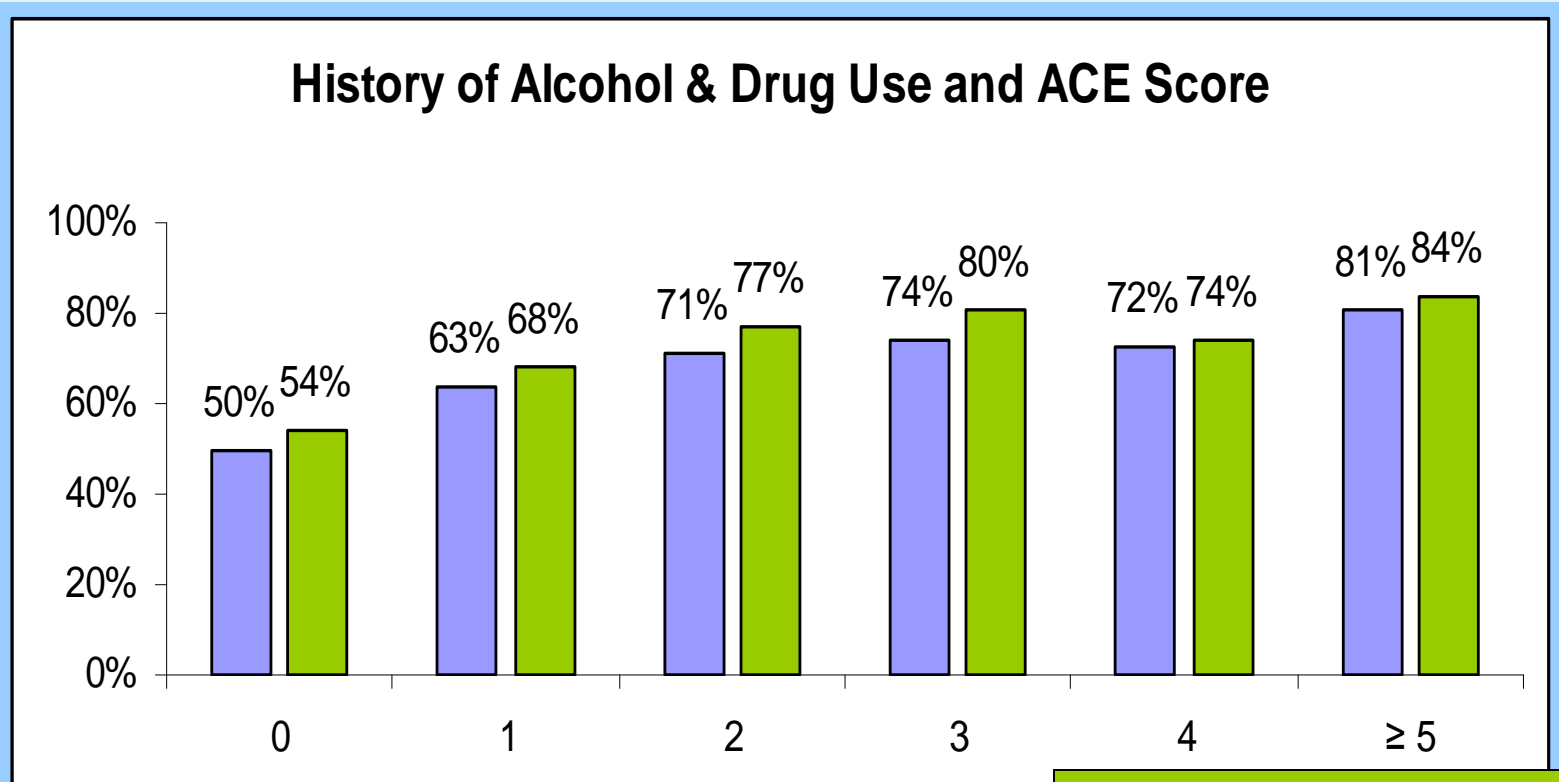
87.2% with two additional ACEs.

64.8% → incarcerated family member
34.7% → Neglect
29.2% → emotional abuse.



ACE Exposure and Youth Outcomes

Tacoma Urban Network



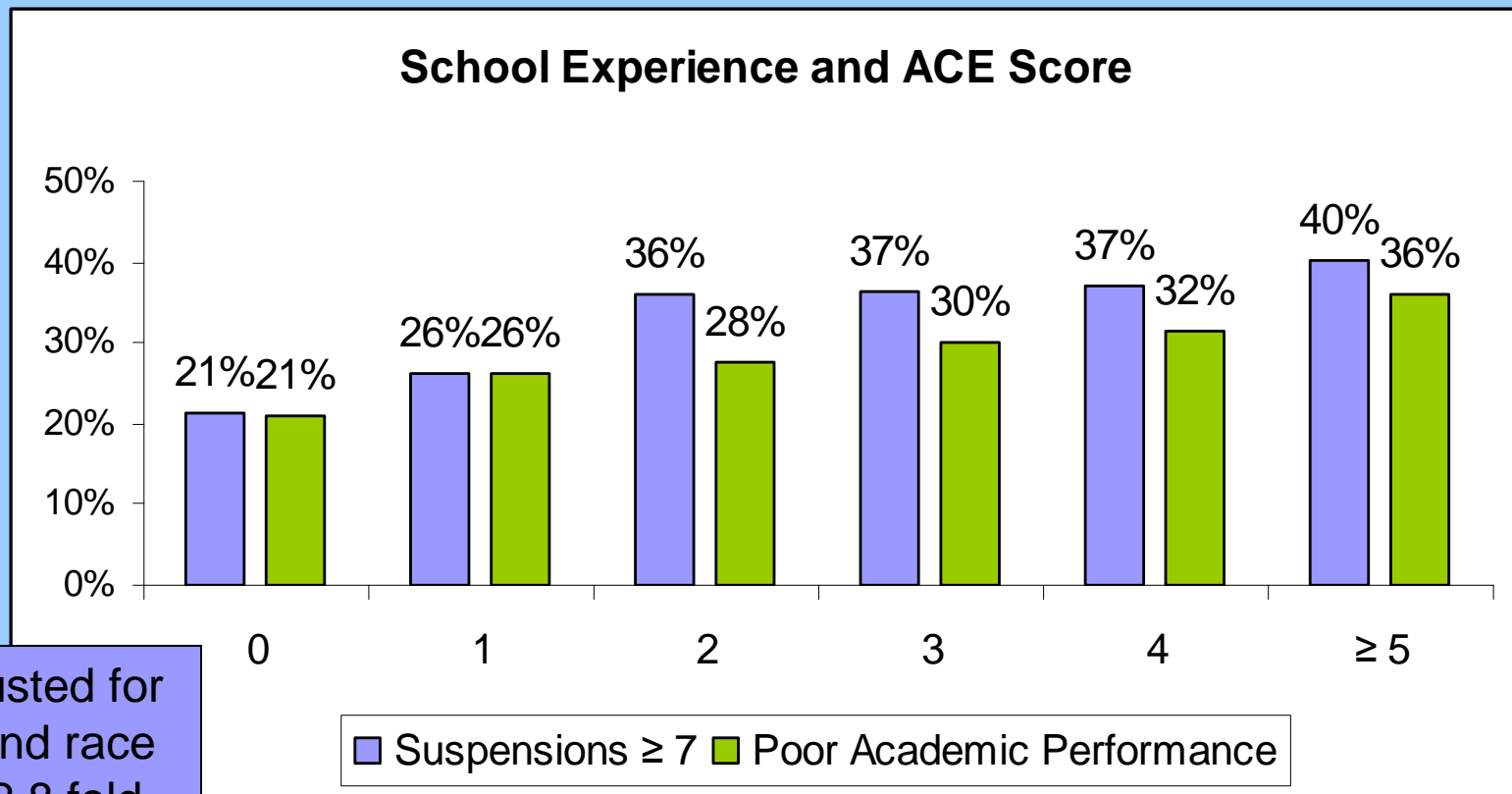
When adjusted for age, sex and race there is a 4.5 fold increase in prevalence from 0 ACEs to 5 or more.

Alcohol Drug

When adjusted for age, sex and race there is a 5.1 fold increase in prevalence from 0 ACEs to 5 or more.



ACE Exposure and Youth Outcomes



When adjusted for age, sex and race there is a 2.8 fold increase in prevalence from 0 ACEs to 5 or more.

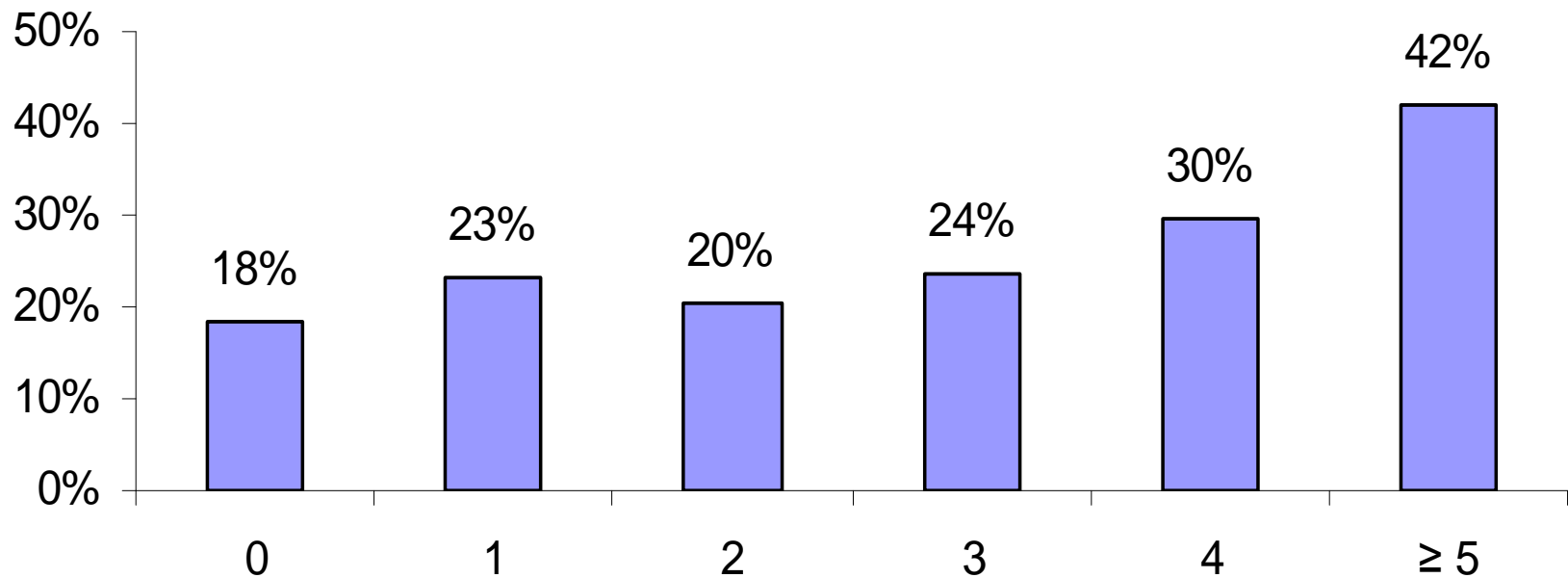
When adjusted for age, sex and race there is a 2 fold increase in prevalence from 0 ACEs to 5 or more.



ACE Exposure and Youth Outcomes

Tacoma
Urban
Network

History of Suicide Ideation and ACE Score

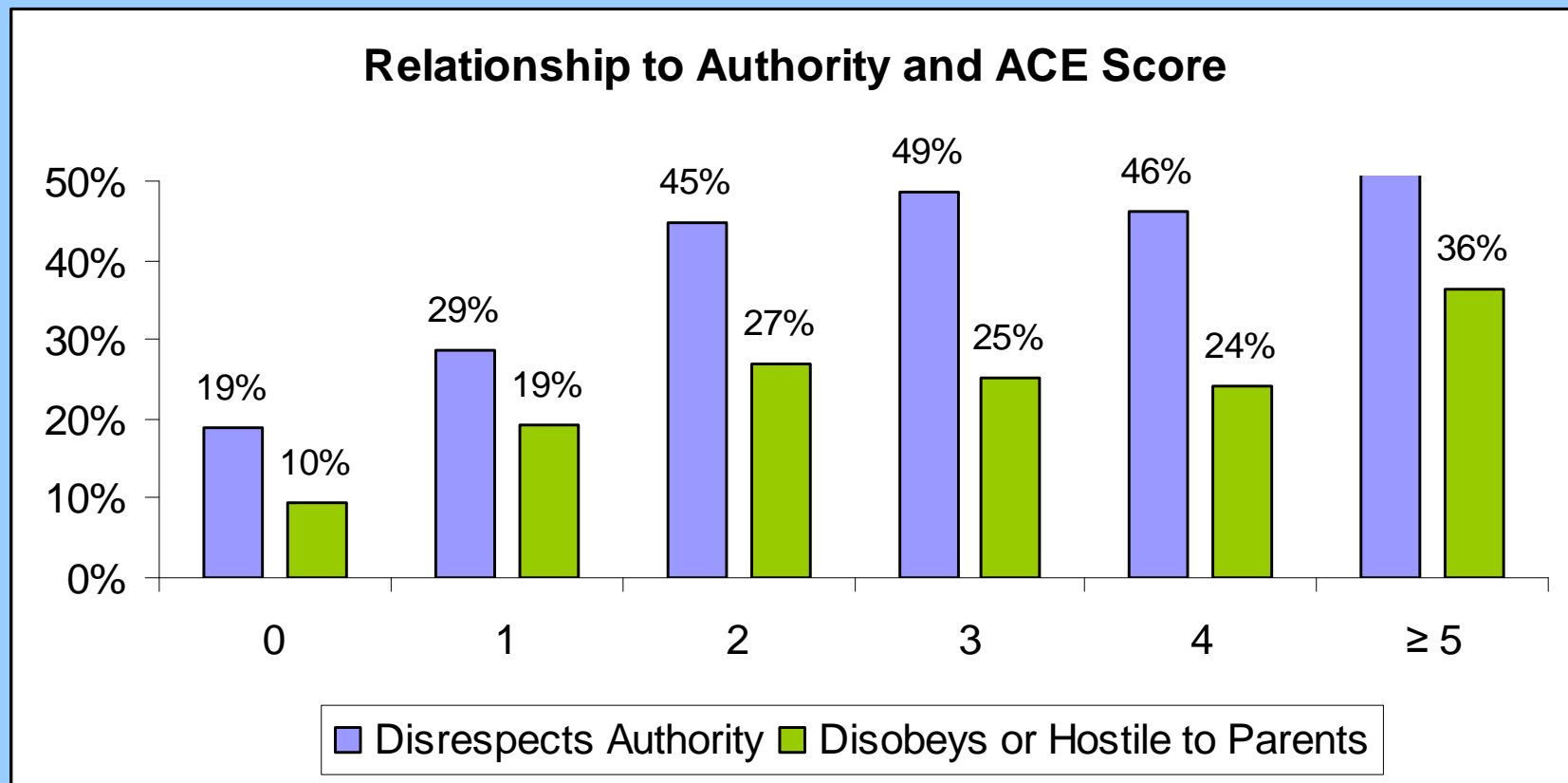


When adjusted for age, sex and race there is a 2.7 fold increase in prevalence from 0 ACEs to 5 or more.



ACE Exposure and Youth Outcomes

Tacoma Urban Network



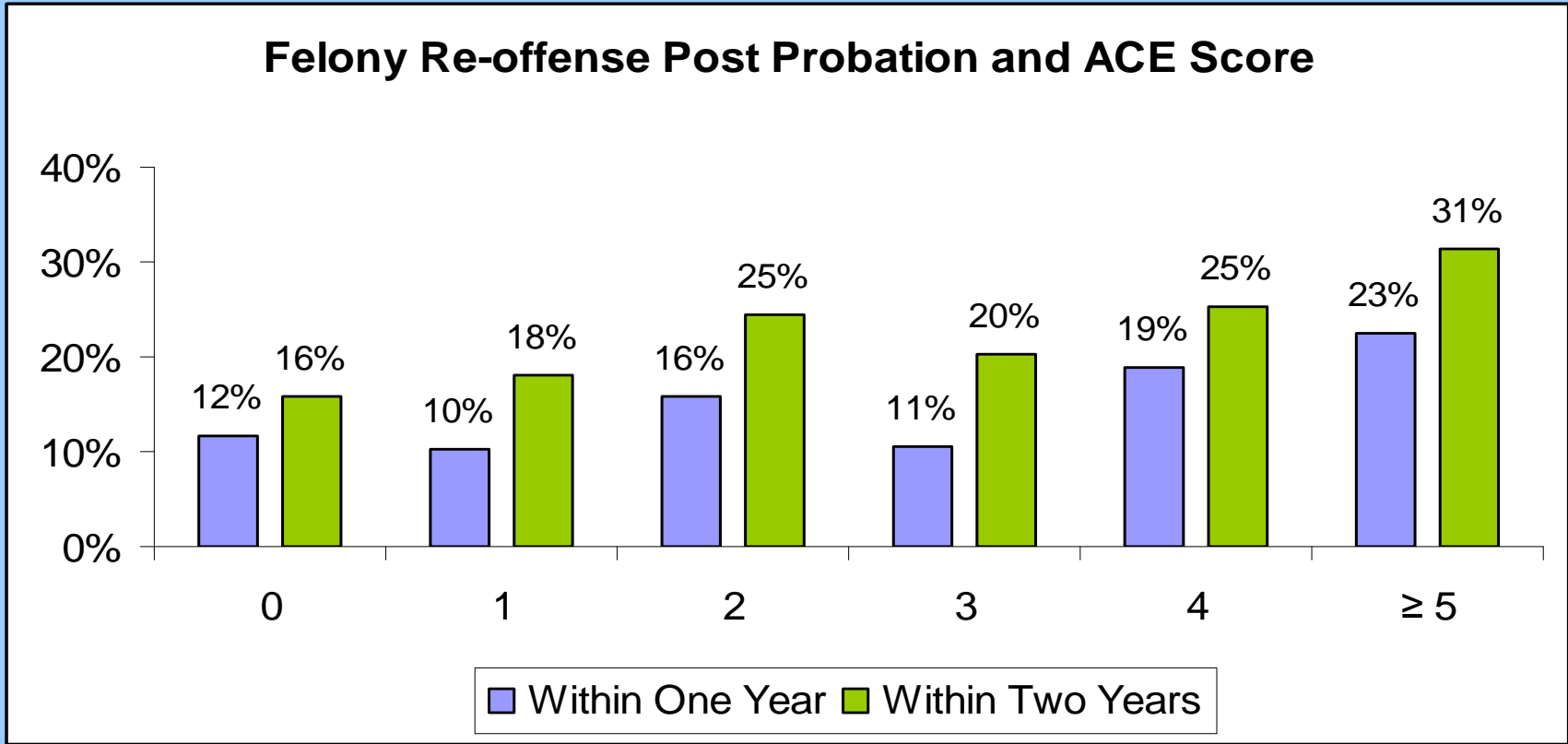
When adjusted for age, sex and race there is a 4.5 fold increase in prevalence from 0 ACEs to 5 or more.

When adjusted for age, sex and race there is a 5.5 fold increase in prevalence from 0 ACEs to 5 or more.



ACE Exposure and Youth Outcomes

Tacoma Urban Network



When adjusted for age, sex and race there is a 2.2 fold increase in prevalence from 0 ACEs to 5 or more.

When adjusted for age, sex and race there is a 2.5 fold increase in prevalence from 0 ACEs to 5 or more.



Adverse Childhood Experiences as a Juvenile Justice Issue

Tacoma
Urban
Network

Juvenile Justice Goals

- Public Safety
- Youth Accountability
- Youth Rehabilitation

Youth are:
Edgy, Hot Tempered
Impulsive,
Hyper-vigilant
Brawn over Brains

Adverse Childhood Experiences

- Engages the Stress Response system and alters the brain development
- Prepares the youth for a tough life in a malevolent world
- Youth survive in the worst conditions



Adverse Childhood Experiences as a Juvenile Justice Issue

Tacoma
Urban
Network

Teach Skills

- Self Regulation
 - Notice how their body feels when agitated
 - Teach deep, relaxation breathing
- Self Efficacy
 - Help youth see choices
 - Intentional about decision-making
 - Identify and build on the youth's skills
- Understand that youth are acting in a predictable manner