

Safety

Children

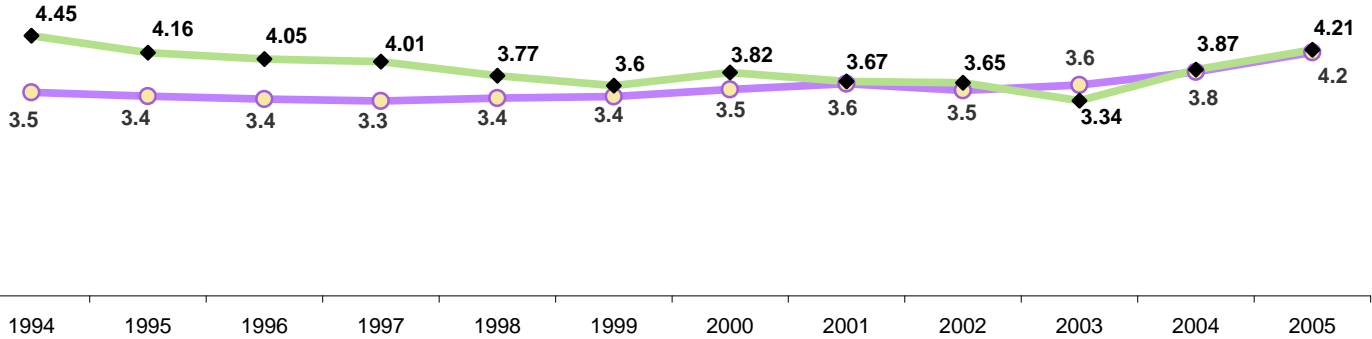
Charts based on child population (0-17)

1994	1995	1996	1997	1998	1999	2000	2001	2002	2003	2004	2005	2006	2007
179,685	182,397	184,662	186,988	189,042	190,320	190,569	192,324	193,597	193,788	194,325	196,093	199,141	202,065

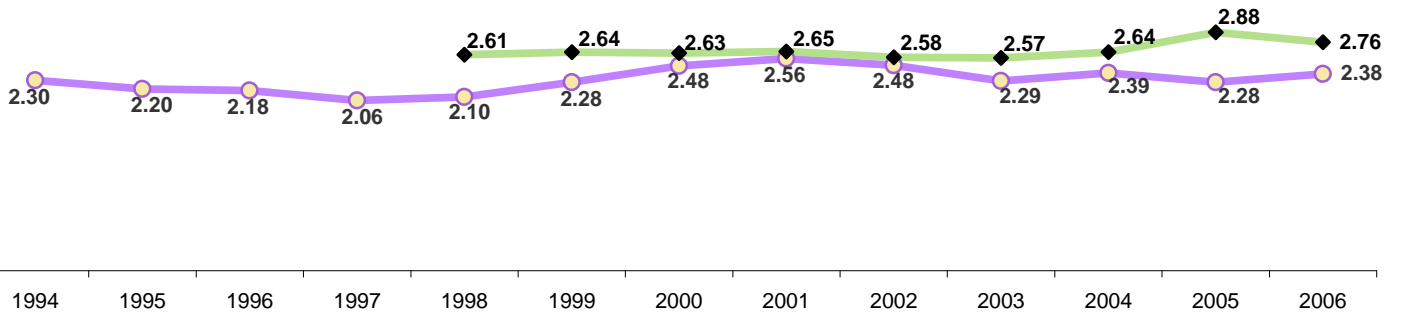
State

County

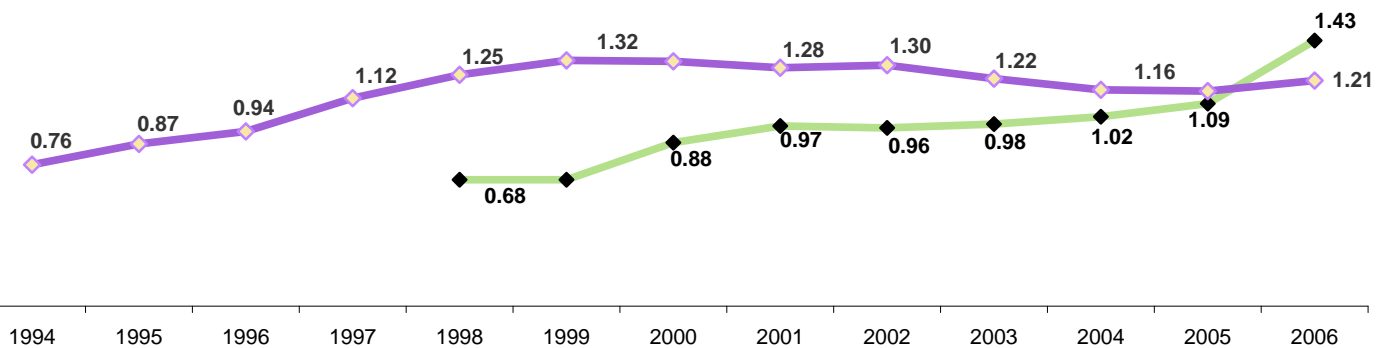
Hospitalizations (0-17)



Out of Home Placements Filed



Terminations Filed



Pierce

Safety

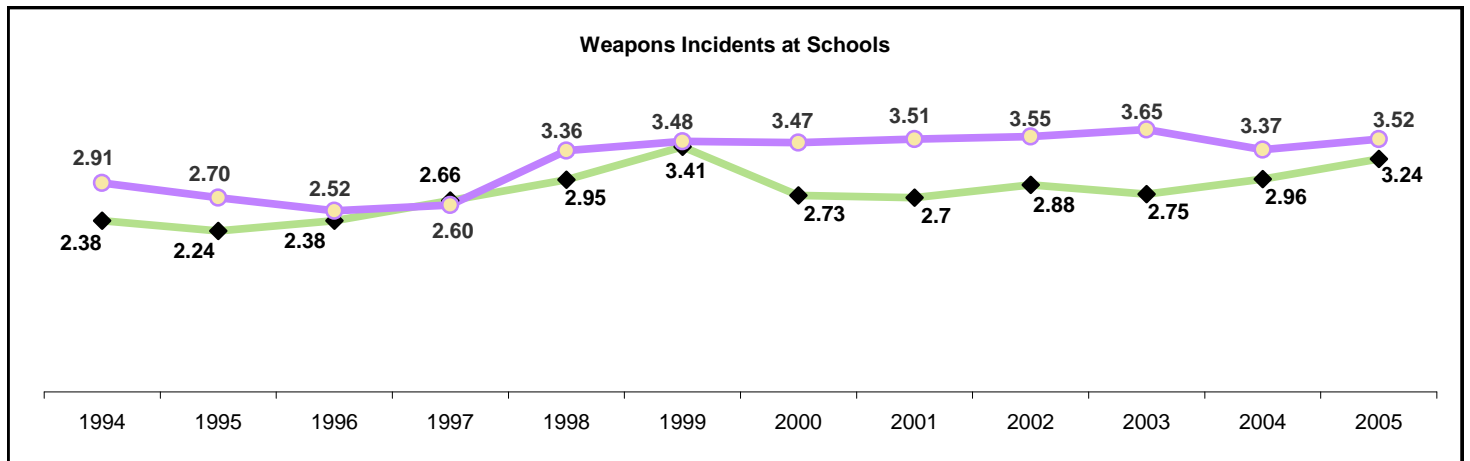
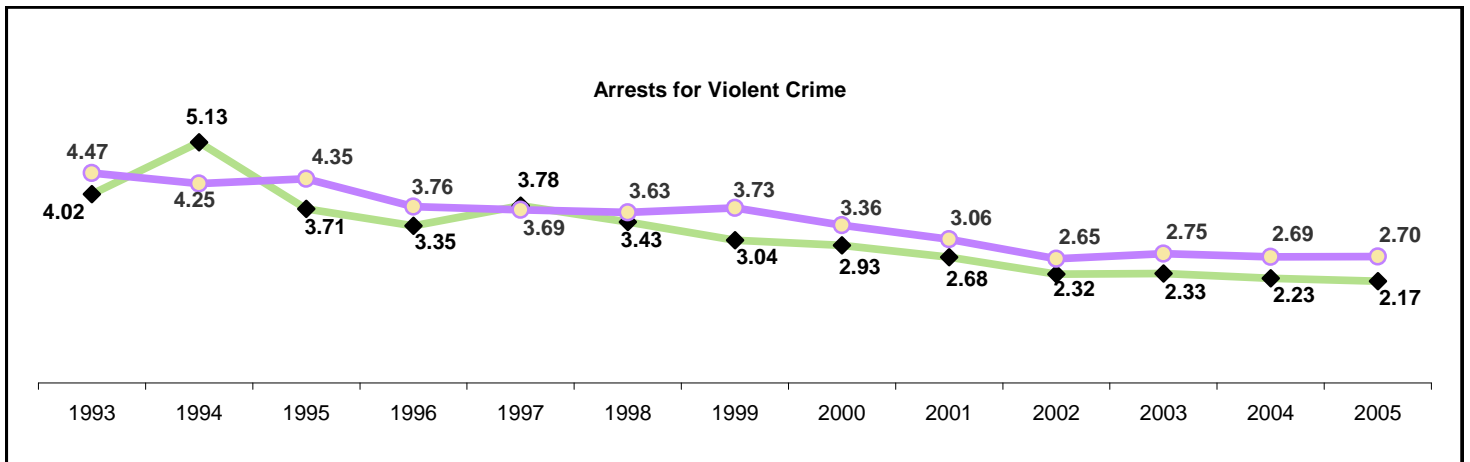
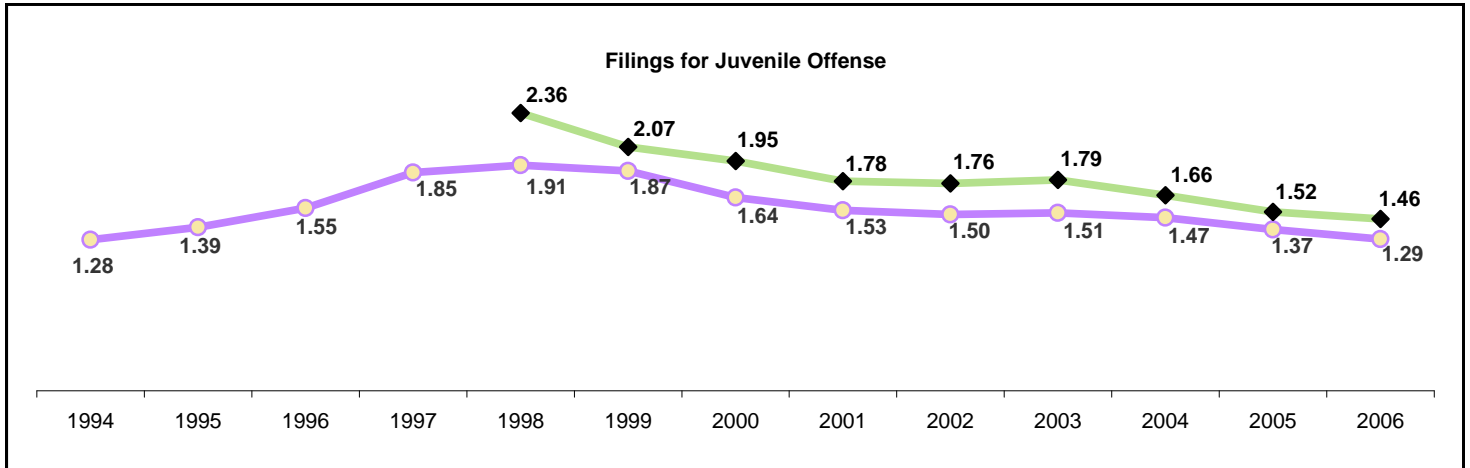
Teen

Charts based on child population (0-17)

	1994	1995	1996	1997	1998	1999	2000	2001	2002	2003	2004	2005	2006	2007
	179,685	182,397	184,662	186,988	189,042	190,320	190,569	192,324	193,597	193,788	194,325	196,093	199,141	202,065

State

County



Health

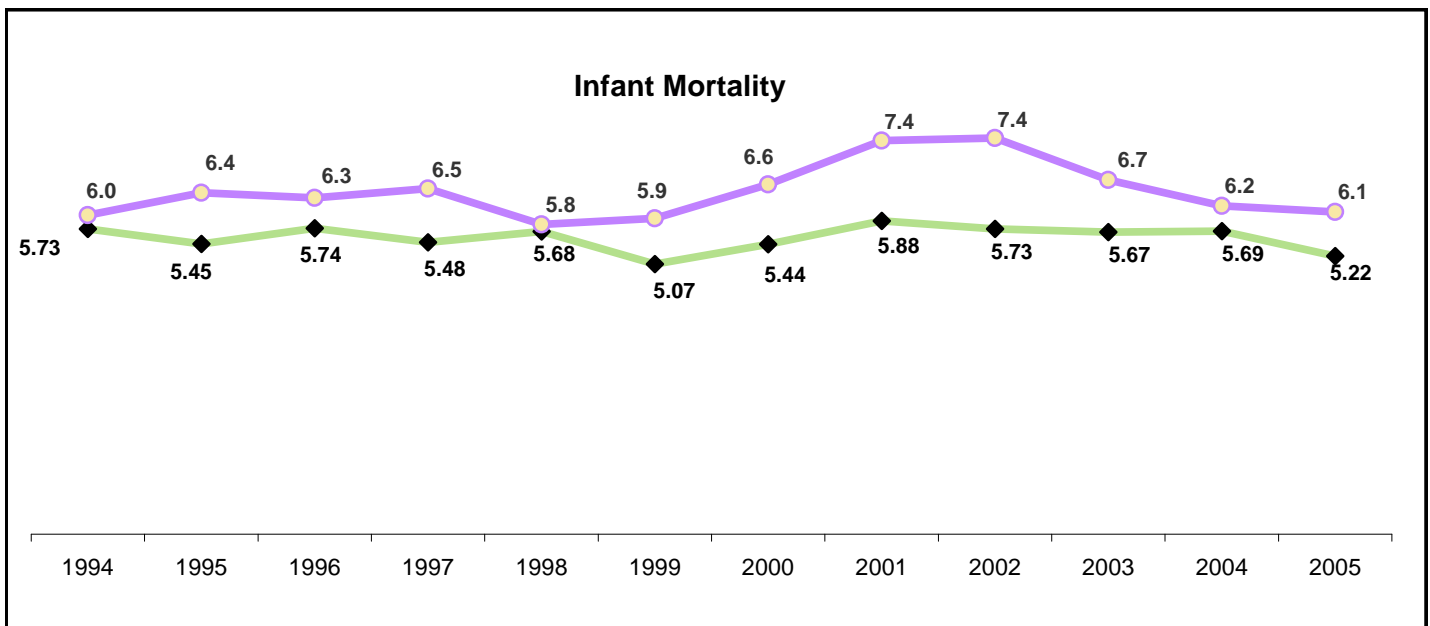
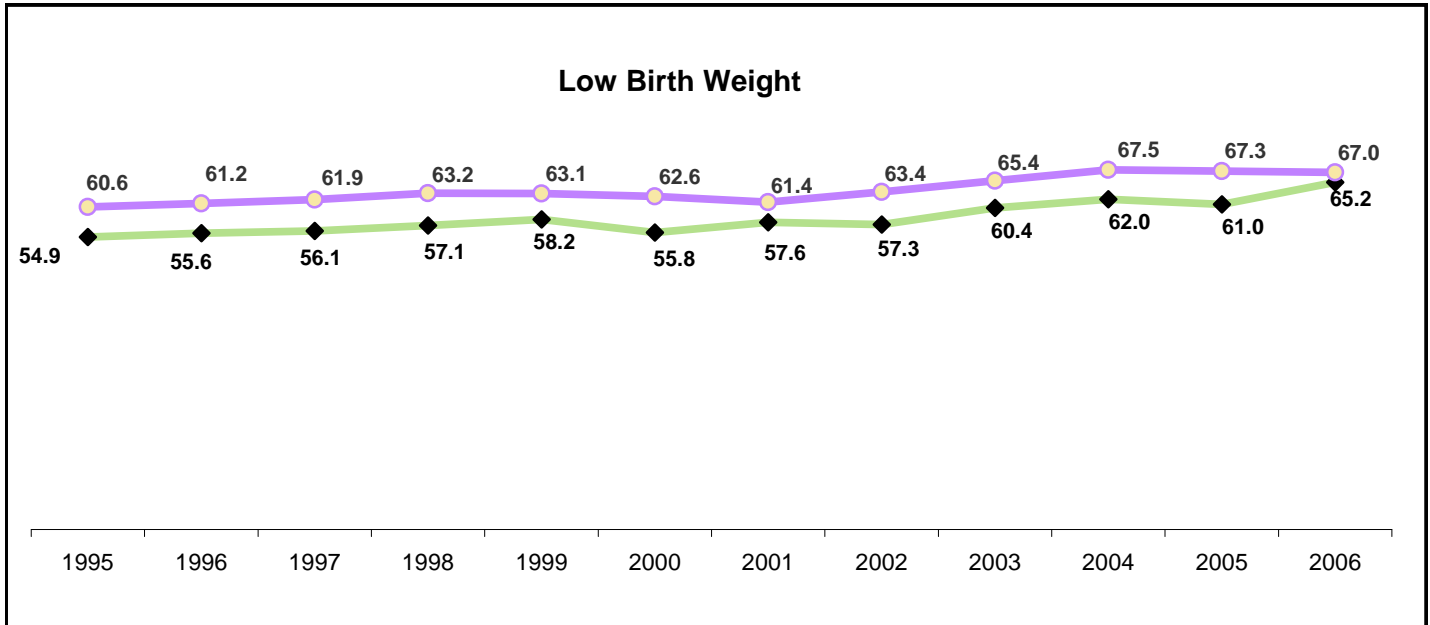
Children

Charts based on child population (0-17)

1994	1995	1996	1997	1998	1999	2000	2001	2002	2003	2004	2005	2006	2007
179,685	182,397	184,662	186,988	189,042	190,320	190,569	192,324	193,597	193,788	194,325	196,093	199,141	202,065

State

County



Health

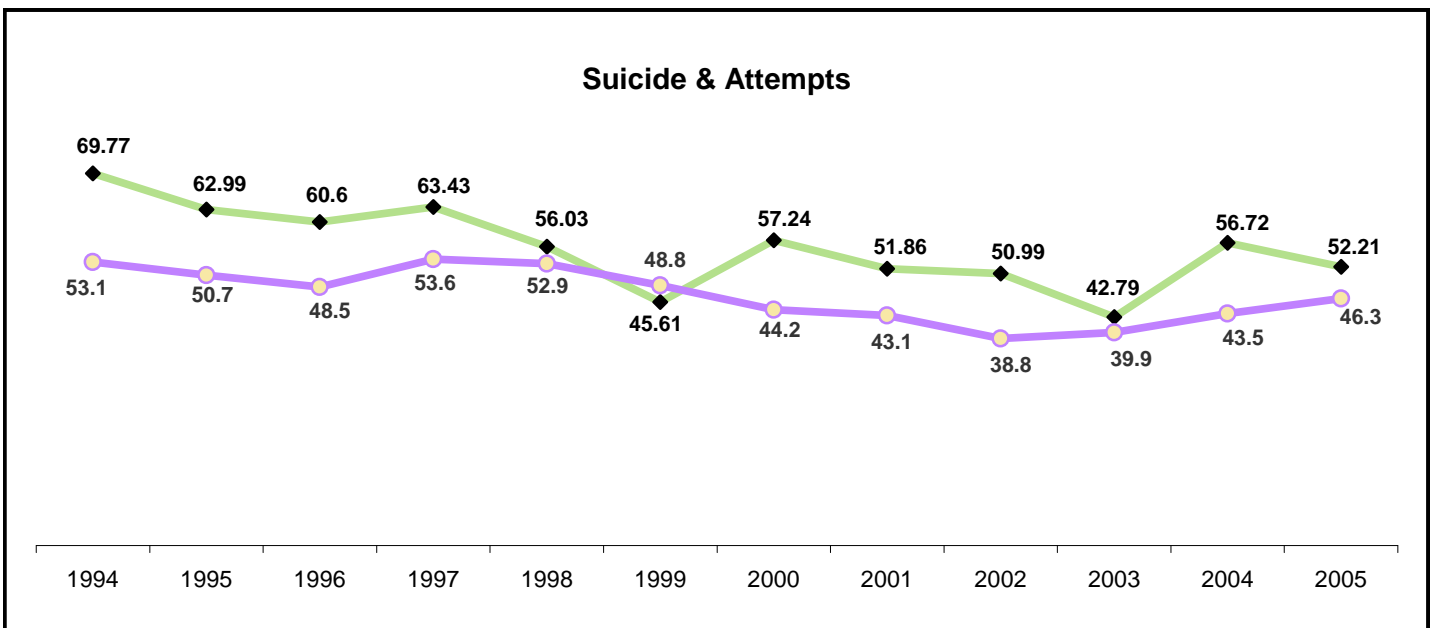
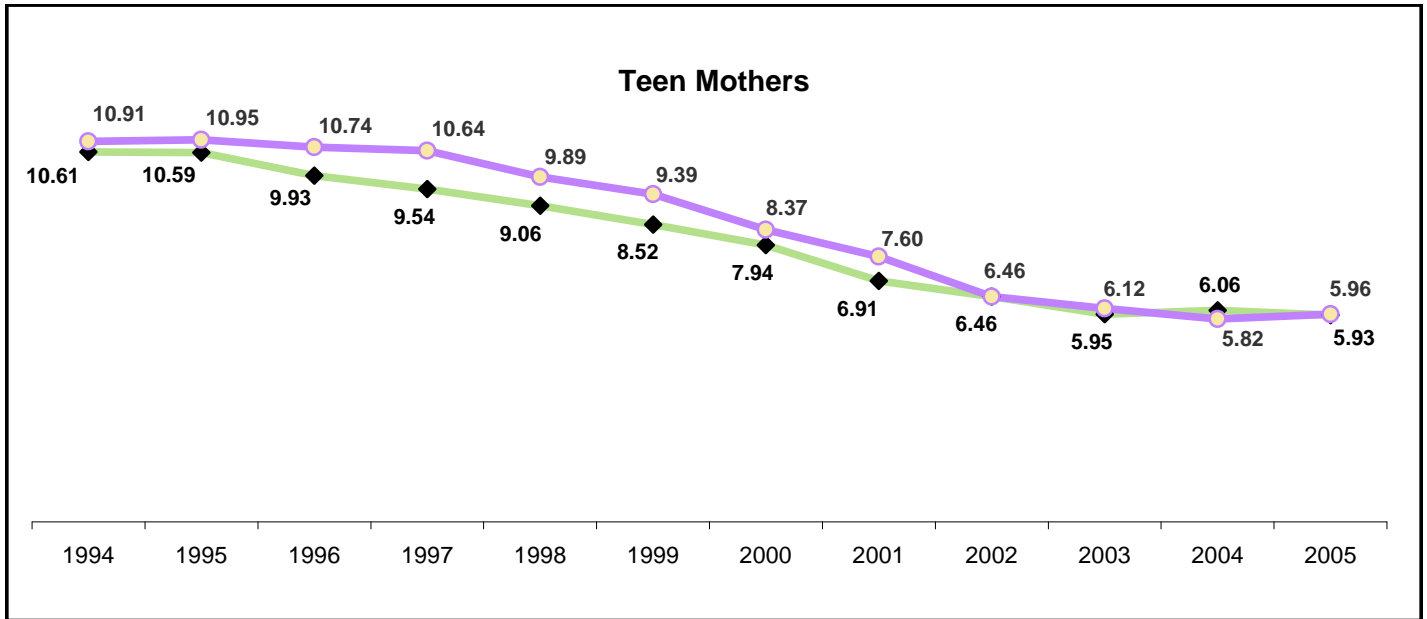
Teen

Charts based on child population (0-17)

	1994	1995	1996	1997	1998	1999	2000	2001	2002	2003	2004	2005	2006	2007
	179,685	182,397	184,662	186,988	189,042	190,320	190,569	192,324	193,597	193,788	194,325	196,093	199,141	202,065

State

County



Human Development

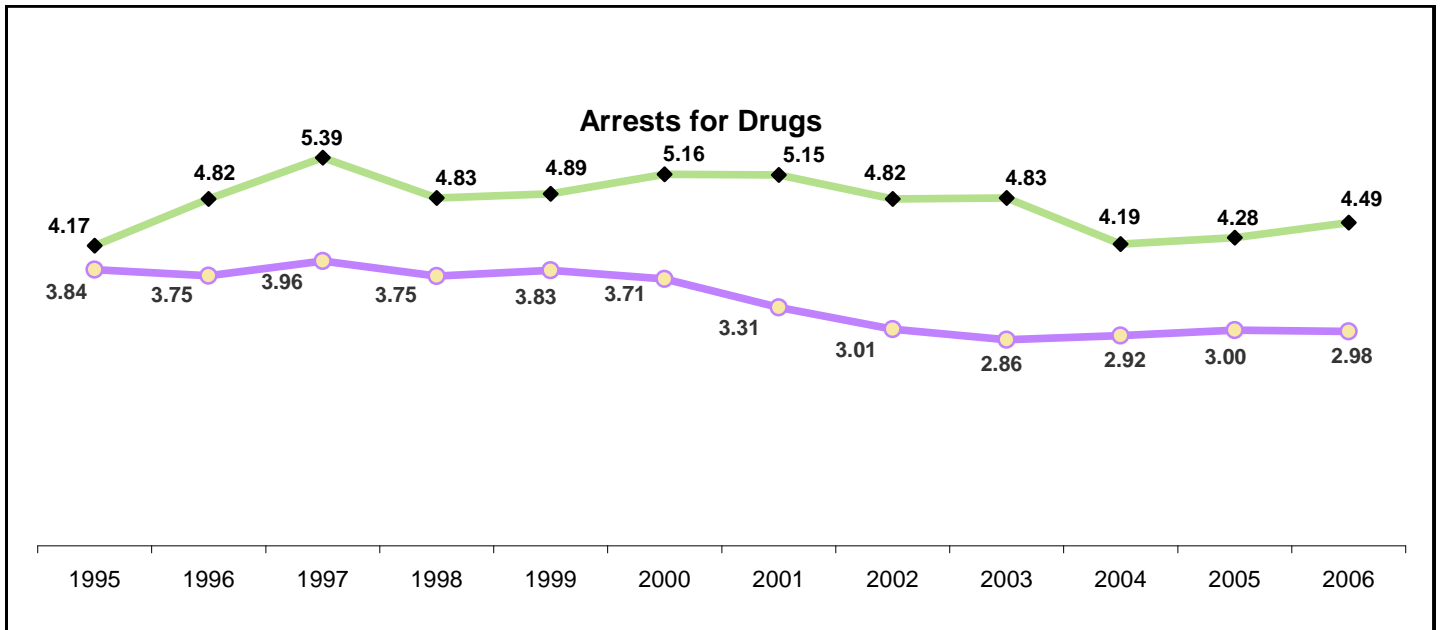
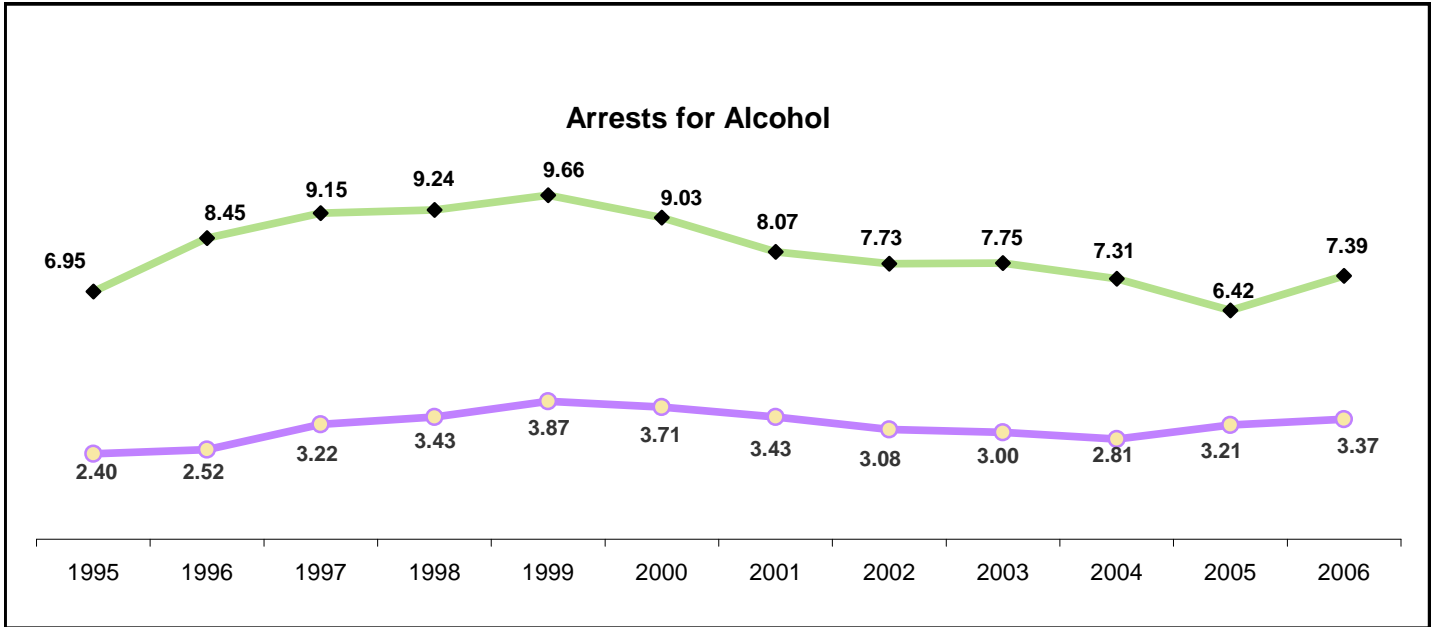
Teen

Charts based on child population (0-17)

1994	1995	1996	1997	1998	1999	2000	2001	2002	2003	2004	2005	2006	2007
179,685	182,397	184,662	186,988	189,042	190,320	190,569	192,324	193,597	193,788	194,325	196,093	199,141	202,065

State

County



Learning & Skill Building

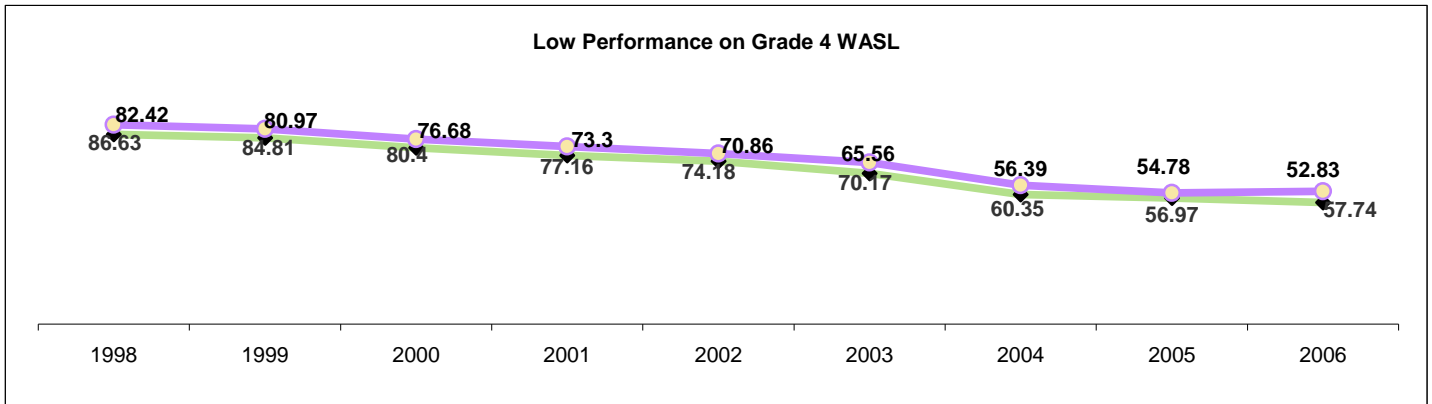
Children

Charts based on child population (0-17)

Year	1994	1995	1996	1997	1998	1999	2000	2001	2002	2003	2004	2005	2006	2007
Population	179,685	182,397	184,662	186,988	189,042	190,320	190,569	192,324	193,597	193,788	194,325	196,093	199,141	202,065

State

County



Teen

